



Fiery Command WorkStation 5

Fiery Sets a New Standard for the Printing Experience

Server & Controller Solutions

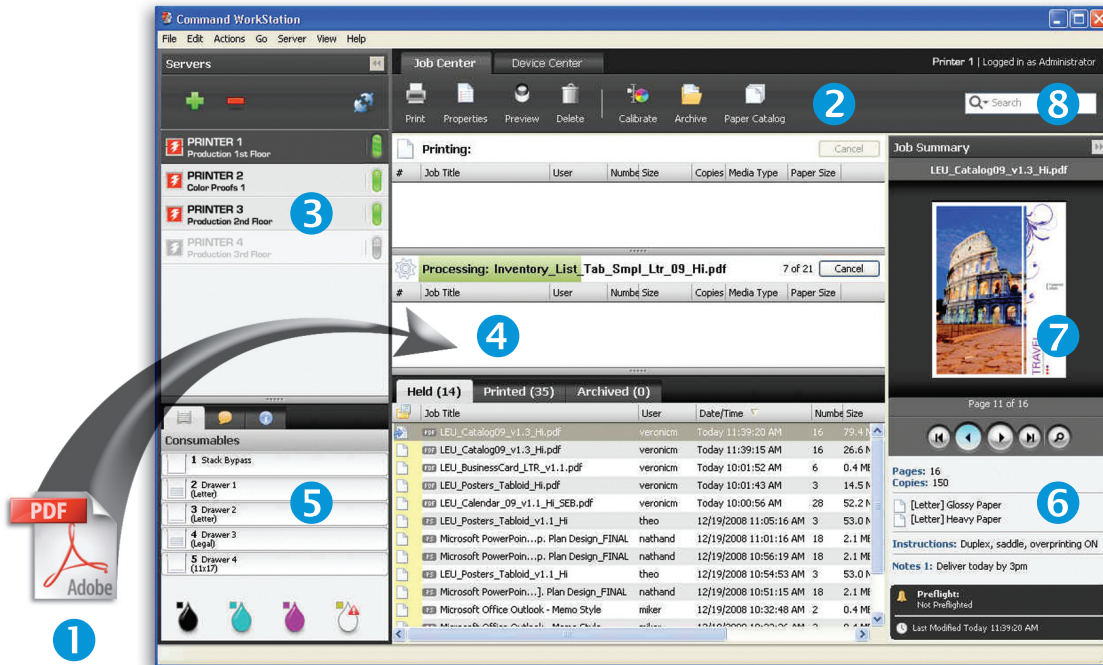


Fiery Command WorkStation 5

Fiery Command WorkStation® (CWS5) sets a new standard for printing, making it more productive, intuitive and flexible. It centralizes job management, connects to all Fiery® servers on the network and achieves optimal results in real time to increase productivity. The intuitive interface makes complexity simple, regardless of the operators' experience, while the flexible software adapts to any environment.

Uncluttered Workspace

An uncluttered workspace is one key to working productively. CWS5 helps accomplish this task through the Job Center area, a centralized location to view and manage jobs sent to the Fiery server. It is the operator's main user interface for all job management and set-up controls.



- 1 Drag & drop capabilities for fewer clicks
- 2 Customizable tool bar
- 3 Instant status of all Fiery servers
- 4 Job grouping for efficient job management and visibility of job status
- 5 Instant information on engine, consumables and media
- 6 Instant information on job requirements
- 7 Integrated job preview
- 8 Integrated job search across all Fiery servers

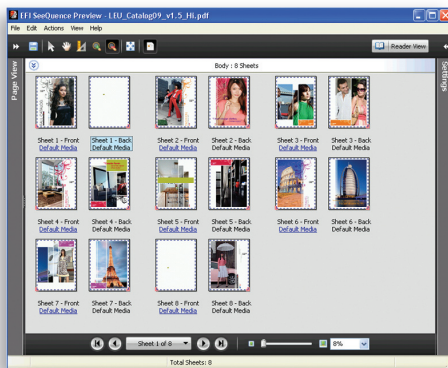
Job Center makes users more productive with one centralized location to view and manage jobs.



Amazing Previews

CWS5 offers integrated, fast and flexible previews that minimize printing errors and waste, while making the user experience simpler and more productive with:

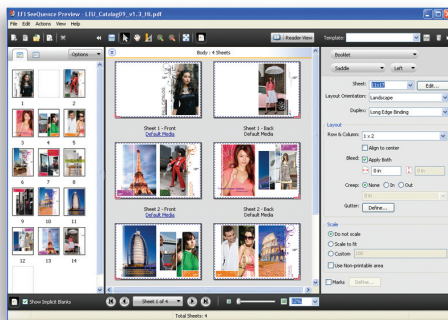
- **Integrated job previews** to navigate through pages while getting other critical information in the Job Center view.
- **SeeSequence Preview** shows how the job content will lay on the pages and helps navigate throughout the entire document with ease.
- **Preview of processed jobs** to add, delete, re-order and merge pages from other jobs with an easy drag & drop.



SeeSequence Preview is a standard feature of CWS5.

Fiery SeeSequence Suite Option

The flexible SeeSequence Suite option comes with an easy upgrade path to the newly designed and integrated document layout application that has an intuitive visual interface. The option also comes with a host of other benefits:



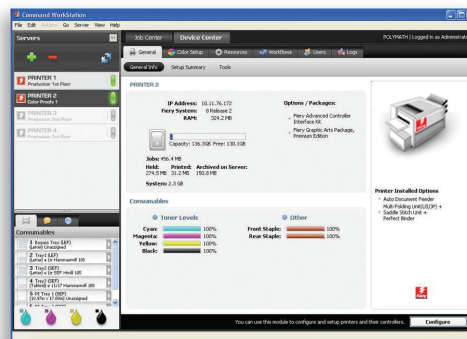
SeeSequence Impose and SeeSequence Compose work in an integrated user interface.

- SeeSequence Suite **simplifies document preparation** of complex jobs and gives operators the tools to deliver superb results with ease.
- It includes **Fiery SeeSequence Impose and Fiery SeeSequence Compose**, which can work independently or in a tightly integrated workflow, allowing operators to accurately set up jobs and soft proof. SeeSequence Impose enables error-free layout at a sheet level. SeeSequence Compose performs all document make-ready functions at a page level.
- **SeeSequence Compose and SeeSequence Impose work seamlessly together in the same window**, letting users apply Compose and Impose functionality to the same document in any order.

Cohesive Tool Integration

The Device Center Area integrates server set up functions under a single workspace including color management tools, VDP resources, fonts, Virtual Printers, job logs. Highlights are:

- **Setup Summary:** Enables users to view the Configuration Sheet and save as PDF or text.
- **Color Setup:** Offers a more intuitive color setup that makes it much easier to see how color flow works.
- **Job Logs:** Filters logs according to dates and exports the entire job log in order to preview and manipulate the data in other applications like Microsoft Excel.
- **VDP Resources :** integrates all VDP elements, which can be managed on a job basis, including FreeForm™ masters.



Device Center shows system information at a glance.

Flexible Integration and Upgrade Path

- **Full cross-platform Mac and Windows support:**
Keeps the exact same functionality and look & feel.
- **Backward compatible to Fiery System 6:**
Allows customers to update CWS and refresh their existing Fiery server's software without additional cost.
- **Fully functional remote connection:** Still maintains the competitive advantage of being fully functional in local and remote connections. Can connect multiple servers from one remote client and have multiple clients connect to a single server.
- **Customer determined transition:** Allows customers to pace their transition to the new CWS5 by running and operating CWS4 in parallel on the same client.

Interested in trying Fiery Command WorkStation 5?

Visit www.efi.com/CWS5 and get it free.

System Requirements

Fiery Server Requirements

- Fiery System 6 or higher*

Client Stations

Mac OS

- Processor: PowerPC® G5 or multicore Intel® processor.
- Mac OS X v10.4.9 and 10.5.
- 1 GB of RAM or more recommended.
- 3 GB of available hard-drive space.
- 1024x768 display with 16-bit video card.

Windows

- Pentium 4, 1 GHz or faster processor.
- Microsoft® Windows® XP or Windows Vista®.
- 1 GB of RAM or more recommended.
- 3 GB of available hard-drive space.
- 1024x768 display with 16-bit video card.

Print to win with EFI.

EFI (www.efi.com) is the world leader in digital print servers and controllers, superwide format printers and inks, wide-format printers, industrial inkjet printing systems and APPS solutions. EFI is dedicated to giving customers a competitive edge with award-winning, scalable solutions from creation to print that maximize productivity and increase profits. EFI maintains 26 offices worldwide.

* Notes:

1. To ensure connection to a Fiery server running Fiery System 6 software or above, please refer to www.efi.com/CWS5 for the complete list of supporting Fiery servers.
2. Fiery Command WorkStation only exposes the functionality of the Fiery server that it is currently connected to during printing.